



Steering, Brake & Suspension Specialists

#CPP113 - Sway Bar Installation Instructions

1" Front Sway Bar for 1965-79 Ford F-Series Trucks / 1966-74 Ford Bronco



Hardware:	2 pc	U-Bolts
2 pc End-links	2 pc	Angle Brackets
2 pc D-Bushings	2 pc	Bolts
2 pc D Bushing Brackets	6 pc	Lock-Nuts

PLEASE NOTE: The installer needs to make sure that nothing can make contact with a brake hose, caliper, or other brake component at any point through the entire range of steering and suspension movement. The installer also needs to make sure none of the steering or braking components can become bound or jammed at any time through the range of suspension or steering movement.

NOTE: It is recommended to perform this installation process with the suspension set at the final ride height position.

Instructions:

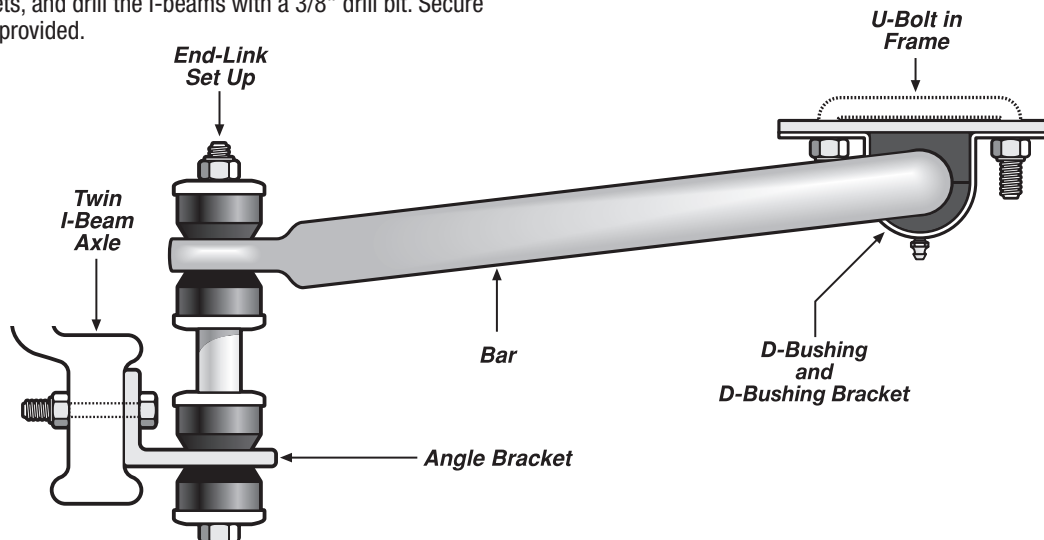
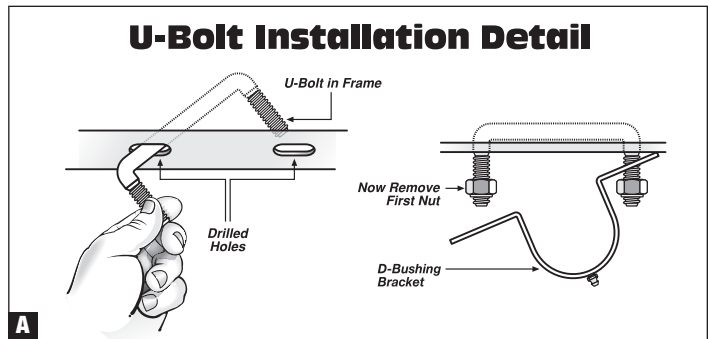
1. Assemble the end-links as shown. For convenience, tie the mid-section of the bar up against the frame when connecting the end-link assemblies to the I-beams. Be sure that the washers have their cupped or hollow side towards the bushings, and the bushings have the stepped/tapered surface towards the end-link mount or bar eye. Tighten the lock-nut so the assembly is securely snug and the bushings just deform slightly. **DO NOT** over tighten.
2. With the suspension set at ride height, position the bar so the angle brackets locate on the front of the I-beams in the web just inboard of the spring seats. With the bar centered on the vehicle, mark through the angle brackets, and drill the I-beams with a 3/8" drill bit. Secure with a 3/8" bolt provided.

3. The bar D-bushings should be in place on the bar against the frame. Cover the bushings with the D-bushing brackets, and mark the frame through the holes. Drill with a 3/8" inch drill bit.
4. Place a lock-nut on one end of the U-bolt, and insert the other end through the end of the frame bracket and then into the frame. Maneuver it until it reappears through the other hole and then cover with the free end of the D-bushing bracket and secure with the other lock-nut to hold the D-bushing and bar in place. (FIG. A)
5. Have someone safely bounce the vehicle so you can check clearance of all parts throughout the suspension travel distance. If all is clear, check all fastenings for suitable tightness. Road test the vehicle to familiarize yourself with its new handling.

NOTE: As we cannot supervise your installation or your driving we cannot be held responsible for more than the cost of the kit.

GENERAL TORQUE SPECIFICATIONS:

1/4"	grade 5	10 lb/ft	1/4"	grade 8	14 lb/ft
5/16"	grade 5	19 lb/ft	5/16"	grade 8	29 lb/ft
3/8"	grade 5	33 lb/ft	3/8"	grade 8	47 lb/ft
7/16"	grade 5	54 lb/ft	7/16"	grade 8	78 lb/ft
1/2"	grade 5	78 lb/ft	1/2"	grade 8	119 lb/ft
9/16"	grade 5	114 lb/ft	9/16"	grade 8	169 lb/ft
5/8"	grade 5	154 lb/ft	5/8"	grade 8	230 lb/ft



© Classic Performance Products, Inc. 2019 All rights reserved. This document may not be reproduced without prior written permission of CPP.

Classic Performance Products, Inc. 714.522.2000 | fax 714.522.2500

378 E. Orangethorpe Ave. | Placentia, CA 92870 | www.classicperform.com

Rev. 06/29/2019